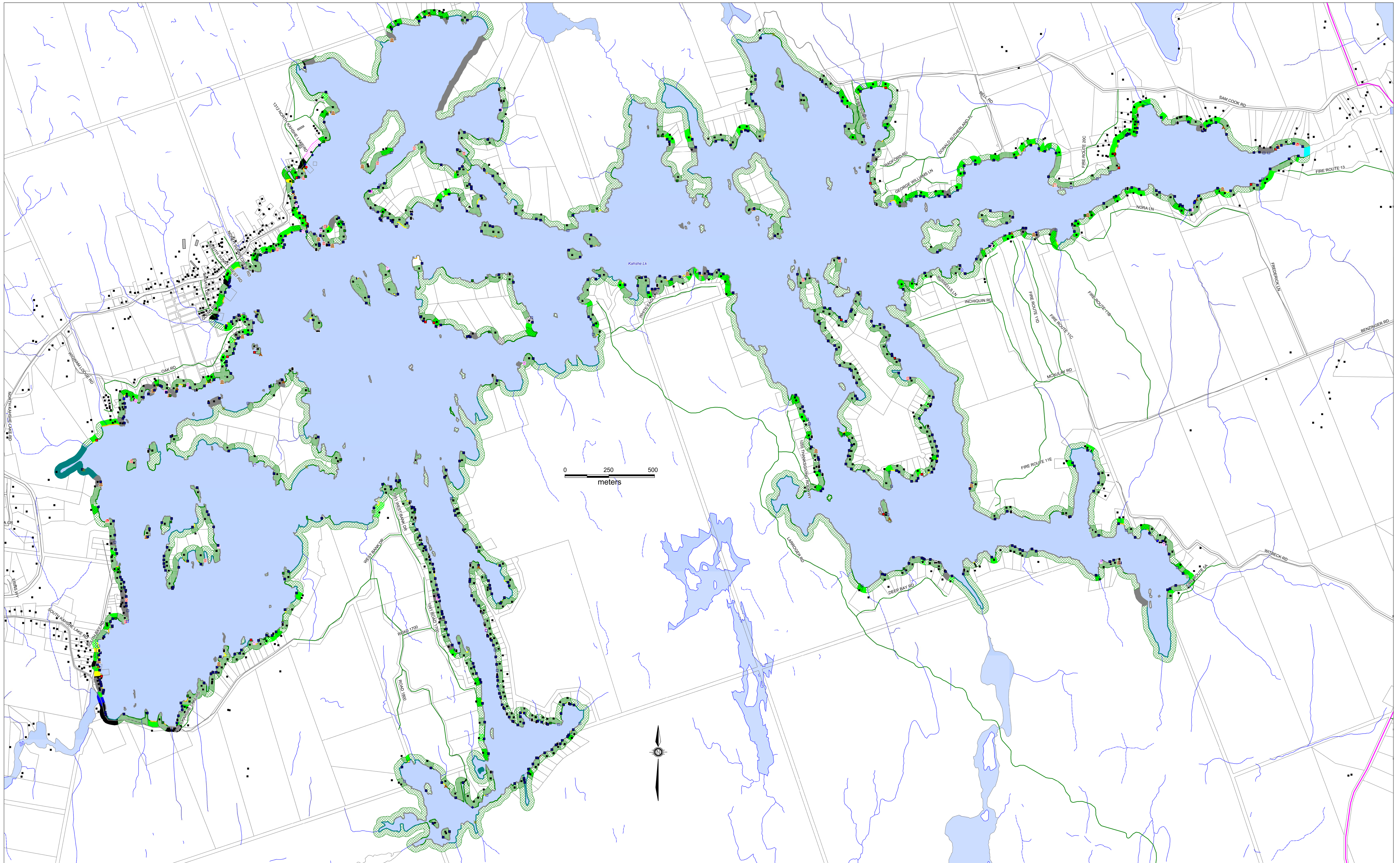


# Kahshe Lake Land Use Survey, July 2015



**LEGEND**

- PROVINCIAL HIGHWAY
- DISTRICT ROAD
- TOWNSHIP ROAD
- PRIVATE ROAD
- RAILWAY
- PROPOSED ROAD
- TRAIL
- TRANSMISSION LINE
- LOT AND CONCESSION LINE
- MUNICIPAL BOUNDARY

**Structure Legend**

Structure Type	Count	Structure Type	Count
BHC1	1	DCA	2
BHC2	1	DF	4
BHF	1	DF1	1
BHF1	14	DF2	1
BHF2	2	DF3	1
BHF3	1	DF4	1
BHL	1	DF5	1
BHL1	3	DF6	593
BHL2	1	DF7	62
BHP	1	DF8	20
BHP1	13	DF9	11
BHP2	5	DF10	55
BHP3	1	NBL	5
DC	1	CMR	6
DC1	1	OSB	3
DC2	2	OSD	77
DC3	2	OSS	24
DC4	2	OSSC	14
DC5	2	Total	949
DC6	2		
DC7	2		
DC8	2		
DC9	2		
DC10	2		
DC11	2		
DC12	2		
DC13	2		
DC14	2		
DC15	2		
DC16	2		
DC17	2		
DC18	2		
DC19	2		
DC20	2		
DC21	2		
DC22	2		
DC23	2		
DC24	2		
DC25	2		
DC26	2		
DC27	2		
DC28	2		
DC29	2		
DC30	2		
DC31	2		
DC32	2		
DC33	2		
DC34	2		
DC35	2		
DC36	2		
DC37	2		
DC38	2		
DC39	2		
DC40	2		
DC41	2		
DC42	2		
DC43	2		
DC44	2		
DC45	2		
DC46	2		
DC47	2		
DC48	2		
DC49	2		
DC50	2		
DC51	2		
DC52	2		
DC53	2		
DC54	2		
DC55	2		
DC56	2		
DC57	2		
DC58	2		
DC59	2		
DC60	2		
DC61	2		
DC62	2		
DC63	2		
DC64	2		
DC65	2		
DC66	2		
DC67	2		
DC68	2		
DC69	2		
DC70	2		
DC71	2		
DC72	2		
DC73	2		
DC74	2		
DC75	2		
DC76	2		
DC77	2		
DC78	2		
DC79	2		
DC80	2		
DC81	2		
DC82	2		
DC83	2		
DC84	2		
DC85	2		
DC86	2		
DC87	2		
DC88	2		
DC89	2		
DC90	2		
DC91	2		
DC92	2		
DC93	2		
DC94	2		
DC95	2		
DC96	2		
DC97	2		
DC98	2		
DC99	2		
DC100	2		

**Shoreline Legend**

- NB
- NR
- NS
- NW
- OM
- RC
- RN
- RS
- RW
- SWS
- BW
- W
- YLU

Shoreline Type	Length m	Percent
NR	60,336.35	66.57
NRF	32.78	0.04
NS	13,736.04	15.16
NW	11,908.49	13.34
OM	1,814.51	2.00
RC	22.36	0.02
RN	11.97	0.01
RS	71.43	0.08
RW	6.19	0.01
SWS	152.78	0.17
W	878.46	0.97
WATER	208.35	0.23
YLU	55.31	0.06
YLU	192.12	0.21
Natural	87,277.26	96.29
Allowed	3,319.17	3.71
Total	90,636.43	100.00

**Backlot Legend**

- LUC
- NFD
- NFM
- NFT
- NO
- NR
- NRB
- NRP
- NS
- NW
- ODR
- OMMB
- OR
- WATER
- YL
- YLB
- YLU

Backlot Type	Area.m2	Percent
LUC	4,248.40	0.19
NFD	11,241.54	0.51
NFM	1,315,137.08	51.72
NFT	702,792.56	32.02
NO	14,057.54	0.64
NR	66,383.57	3.02
NRB	8,288.28	0.38
NRP	1,420.17	0.06
NS	3,093.55	0.01
NW	15,904.01	0.72
ODR	512.85	0.02
ODMB	2,507.23	0.11
OR	133,872.33	0.60
WATER	1,566.23	0.07
YL	16,988.63	0.77
YLB	83,642.34	3.81
YLU	116,659.20	5.32
Natural	1,240,271.23	56.51
Allowed	954,600.78	43.49
Total	2,194,872.01	100.00

Produced by the District of Muskoka under licence from Ontario Ministry of Natural Resources. Copyright © Queens Printer 2015. INCLUDES MATERIAL © 2015 OF THE QUEEN'S PRINTER FOR ONTARIO. ALL RIGHTS RESERVED. The information contained herein may be erroneous, inaccurate or misleading. The parties compiling and/or disclosing the information make no warranties whatsoever as to the accuracy of any or all of the information contained herein. Any party relying on this information does so at their own risk and shall not, under any circumstances, make any claim against anyone on the grounds that the information was erroneous, inaccurate or misleading.

This road network information has been generated or adapted from Ontario Road Network Database, a database built from source data provided by the Municipalities of Ontario to the Government of Ontario under licence. The Ontario Road Network Database is the property of the Government of Ontario and is used under licence from the Government of Ontario.

**THE DISTRICT OF MUSKOKA**  
Managing Our Legacy Together

S:\WATER\atqual\Monitoring Program\2015\Kahshe Lake\MapInfo