

The Kahshe Krier



Photo: Andre Fingerle
Lots of snow ...



Photo: Steve Wild
... can do this!

Official newsletter of the KLRA
Published 3 times a year
Editor: Keith Price keithonkahshe@bell.net
90 Meadowvale Drive, Etobicoke, ON, M8Z 3J6
416 233 7688 (h) 416 272 1486 (c) 705 687 7108 (cott)

Spring 2014

A new logo for the KLRA

The new Kahshe Lake Ratepayers' Association logo captures the spirit of our lake with strong symbols of water, land and trees. White pines are the dominant trees in our area and in earlier years, the logging of white pines was a major influence in opening up the lake. The classic imbalanced shape of this tree reflects the predominant wind flow, from west to east.

At the base of the tree are rocks, a common and beautiful sight around the lake, and sometimes in it.

The tree trunk gradually turns into roots; a recognition of the many families that have long ties and connections with our lake.

Notice how the white lines can also be interpreted as waves in the water.

The two dominant colours of blue and green are reflections of the water and greenery that we have all come to appreciate. The circular design reminds us of the many cycles that take place at the lake, including the yearly cycle of the seasons, water, and life.

The clean, simple text complements the overall clean design. The reference to "KahsheLake.ca" is an acknowledgement of and connection to both the present and the future. It brings people to our website, which in itself is a treasury of information, hub of communication and guardian of our past. The inclusion of "Muskoka" provides a reference point, a proud exclamation of where we are located.

The motto "*Dedicated to the preservation of the environment for our grandchildren... and theirs!*" will still appear on letterheads and in the Krier banner.



Kahshe Lake Ratepayers' Association (1994 inc)

www.kahshelake.ca

Membership Correspondence: E. MacLean, Membership Manager,

809-350 Mill Road, Etobicoke, ON, M9C 5R7

Other Correspondence: PO Box 1318, Gravenhurst, ON, Canada, P1P 1V5

KLRA - Dedicated to the preservation of the environment for our grandchildren...and theirs!

President's Message

Winter is finally over, the ice is off the lake, pintail ducks are back for a few weeks before they head off to their summer grounds, and the slow northward migration of minivans filled to the roofline with supplies for the season has begun.

While many of us will arrive to find things just as we left them, unfortunately, some of us will discover that the heavy snows claimed a roof or two. It's saddening to see and must be heart-breaking for those of us who have lost a long-cherished boathouse, cottage roof, or bunkie.



Randy Craig, Barry Elder, Roger Playter, Tim Ottaway, Ron Roberts, John Mertl, and Fred.

On a happier note, the rock markers are scheduled to go in as early as May 10. Please remember to be especially careful while boating at this time of year: there are many logs, branches and miscellaneous lumber floating in the lake.

As usual, the KLRA has a busy year planned, with the time-honoured events taking place. These events – such as the Housey's Rapids Picnic, the Kermit Long Fishing Derby, and the Nagaya Beach Regatta – are great traditions of our community. If you haven't volunteered to help organize or play a role at one of our events in the past, I strongly encourage you to make the leap this year.

We especially need someone to take on the organisation of this year's Regatta. Please contact me john.mertl@gmail.com to organise or help with the Regatta or info@kahshelake.ca to find out how else you can get involved.

The KLRA Annual General Meeting of Members will be held at the Muskoka Bay Club on Sunday July 6 from 10:00 am - 1 pm. Please join us to hear directly from our Ward councillors, representatives from Gravenhurst on matters that you care about. We will have a special guest, Donna Kearney, a nurse practitioner from the District of Muskoka, to inform us of the District's plans for a rural nursing station. Brunch will be available after the meeting. Call the Muskoka Club (705-687-7900 ext. 502) to reserve.



Welcome back. Have a wonderful, and safe summer.

John Mertl

Where to find it

Kahshe Merchandise	p3	What's on in Gravenhurst	p7
Door and Dock Drop	p3	The Real Muskoka, Opera House	p8
Cottage Life TV	p4	Fishing Derby	p8
Kahshe Photo Contest	p4	Craft Show, Ryde 135	p9
Lake Steward's Report	p5	Board of Directors	p9
Summer at the Lake	p6	In Memoriam, Renting your cottage	p10
Music on the Barge	p6	Advertisers, HaulAwayDay	p11
		Advertisers	p12



If you love your lake, wear it!



All items will be on sale at all KLRA events and at the Craft Show

Price list

Adult t-shirts	\$15 each
Youth t-shirts	\$12 each
Adult sweat tops	\$25 each
Youth sweat tops	\$22 each
Adult full-zip hoodies	\$35 each
Youth full-zip hoodies	\$32 each
Baseball caps	\$15 each
Compos: 1 adult t-shirt + 1 cap	\$28
1 youth t-shirt + 1 cap	\$25



*T-shirts come in six colours and a variety of sizes.
Sweat tops and hoodies come in black or white in a variety of sizes.
Baseball caps come in 5 colours - one size fits all.*

And if you don't want to wear Kahshe, how about a KLRA coffee mug?
Mugs are either blue printing on white or white printing on blue.



Coffee mugs \$8 each, 2 for \$15, 4 for \$25

Door and Dock Drop with Handbook

On the weekend of June 13, 14, 15 the KLRA will be undertaking its annual Door and Dock Drop. This involves the delivery of important KLRA information to your door, if you have road access, or to your **mainland** dock (i.e. Denne's or Rockhaven), if you are water access cottagers. As in past years, this will include an invitation to join us at the **Annual General Meeting**, to be held again this year at the Muskoka Bay Golf Club on Sunday July 6th from 10 am to 1 pm. The package will also include a list of all the KLRA events, with dates, and contact info for those who might wish to help out, and a KLRA membership form to encourage you to join the association if you haven't already done so.

This year we will also be distributing a copy of the new, very comprehensive update of the KLRA **Good Neighbours' Handbook**, a guide to how to get the best out of the Kahshe experience. Many people have spent many, many hours putting this handbook together. We hope you will keep it readily accessible in your cottage and encourage guests and family to read and profit from the myriad articles, facts and suggestions.

If you do not receive your package on that weekend, please contact one of the Board Members. Contact info is on page 9.





Do you want to be on TV?

A new *Cottage Life TV* series is looking for collectors!

Do you have a home, outbuilding or property filled with antiques? Or did you inherit a collection of vintage items from family or a friend and are looking to purge or sell the items? Do you have a great story about a family heirloom?



Backroad Bounty, a new series on *Cottage Life TV*, is looking for antique and vintage collectors all over Southern Ontario. Whether you have a collection of antique furniture, sporting or fishing equipment, retro items, industrial equipment, or anything of the sort, they want to hear from you! The show will follow two antique expert hosts as they travel through the backroads of Ontario cottage country this summer. They are on the hunt to find hidden vintage treasures, hear the stories behind them and purchase your pieces.



If you are interested in appearing on the show, please contact Lauren Hugh at lhugh@ourhouse-media.com or (416) 551-1032 x260

Announcing the 2014 Kahshe Photo Contest

organized by

Clare Henderson, Cathy Dunphy and Toby Fletcher

The fifth annual Kahshe Photo Contest celebrating the beauty of our lake, its people and its good times has been running since noon on July 27, 2013.

There are **four** categories: three for adult photographers and one for 12 and under photographers.

***Kahshe Nature / Landscape** (the natural beauty of Kahshe, its flora and wildlife, throughout the year)

***Life on Kahshe** (people and good times on Kahshe)

***Kids on Kahshe** (kids being kids at, on and in Kahshe).

***Kids' Eye View**, a special category for **photographers 12 and under** and an opportunity for young people to use their imagination and capture special moments on Kahshe.

For ideas, check the 2013 photos and winners at www.kahshelake.ca.

Rules

The contest runs from noon July 27, 2013, until **4:00 pm, July 23, 2014**.

Any Kahshe photo taken after noon July 27, 2013 and submitted before the deadline is eligible.

Each entrant can submit up to **3** photos: one in each category, all in one category or any combination.

To submit photos, attach them in **jpeg format** to an e-mail and send to photocontest@kahshelake.ca. **Photos not in jpeg format will be disqualified.**

In the e-mail: state clearly the **category** of each photo, give the **full name** of the photographer (including his/her **age** if 12 or under), and provide a **telephone number** for notification of special prizes.

Receipt of the photos will be confirmed.

Prizes and certificates of participation will be awarded at the Kahshe Lake Craft Show and Sale at **12:00 noon on August 3**.

Photos must be received before 4 pm on July 23, 2014.

All judges' decisions are final.

LAKE STEWARD'S REPORT – May 2014

In mid-2013, the KLRA Board made the decision to terminate the Lake Steward Committee and to have the Lake Steward as a sitting member of the newly created Conservation Committee. This made a lot of sense, as many of the activities carried out by the Lake Steward didn't require a full committee and also were aligned with the broader interests of the Conservation Committee.

As in 2012, I've now posted a 2013 Lake Steward report on the KLRA website and it and the associated appendices can be accessed via the Natural Environment using this link: <http://www.kahshelake.ca/Resources/Documents/2013%20Lake%20Steward%20Report/2013%20Kahshe%20Lake%20Steward%20Report-Final.pdf>. While there is an Executive Summary on the web site, I've crunched it down further for this report, as space is limited:

Based on the findings from 30 years of water quality sampling and analysis carried out by The District Municipality of Muskoka (DMM) and the Ontario Ministry of the Environment (MOE) with sampling by the Kahshe Lake Steward, the following conclusions regarding the water quality and biological health of Kahshe and Bass Lakes can be drawn:

- ☑ Total phosphorus concentrations in both Kahshe and Bass Lakes, which are an indicator of the potential for algal blooms, are currently well below the level which would flag them as an Over Threshold lake by DMM.
- ☑ Although total phosphorus levels have not increased or decreased over the past 30 years, both Kahshe and Bass Lakes have been determined by DMM to be moderately sensitive to phosphorus inputs, meaning we need to continue our vigilance in trying to reduce phosphorous levels.
- ☑ The clarity of water also is measured as an early warning indicator of algal growth, and based on the DMM and MOE measurements over the years, the clarity levels, which are measured as the depth than a Secchi disk can be seen, range from 2.5-3.5 m for Kahshe and 1.5-2.5 m for Bass Lake. Clarity in both lakes is less than the 3.0-4.9 m typical clarity for a tea coloured, Mesotrophic lake and more representative of clarity in a mildly Eutrophic lake.
- ☑ Based on the findings from the aquatic invertebrate sampling and identification program which has been operated by the DMM with assistance from the Kahshe Lake Steward and many KL volunteers over the period from 2004 to the present, the abundance and composition of benthic life on Kahshe Lake is similar to or better than the average results for reference sites from a selected database of Muskoka lakes.

Although it is not mentioned in the summary above, I indicated in the 2013 report that I was concerned that neither of the two sampling programs (DMM and MOE) included a location in the southwestern portion of Kahshe Lake, where water is shallower and thus at greater risk of increasing temperature and with the potential for nutrient enrichment resulting in algal blooms. I'm pleased to report here that the MOE has responded to my request for an additional sampling site, which will be located south of Cranberry Island. This means that I'll now be sampling from four locations on the lake instead of the usual three (Deep Bay, Kluey's Bay, Grant's Bay and Cranberry Is).



I also want to again thank the many volunteers seen here counting the benthic invertebrates at the end of last year. As indicated above, this program is important, as it is a real life measure of any trends in biological health of our lake.



We'll be doing this sometime in

August 2014, so will be recruiting new volunteers as details are firmed up. I'll also be doing the water sampling in May and the water clarity measurements every two weeks at the KL monitoring sites, so if you see someone out there with a clip board, Secchi disk and tape measure, don't hesitate to stop and chat, as it makes the job more interesting that way.

Ron Pearson, Lake Steward, KLRA Conservation Committee rpearson1203@rogers.com

Summer at the Lake

The complete guide for cottagers and their friends to the picnics, regattas, derbies and other happenings in, on and around Kahshe Lake in 2013. Brought to you by the Kahshe Lake Ratepayers' Association (KLRA)

June 13, 14, 15

Door and Dock Drop*

Sunday July 6

Annual General Meeting*

Muskoka Bay Club 10 am - 1 pm

Saturday July 19

Housey's Rapids Picnic*

Bass Lake Park 1 pm - 5 pm

Contact Keith Price 705 687 7108

Saturday July 26

Kermit Long Kids' Fishing Derby*

See page 8

Contact Ken Long 705 687 8646

Sunday August 3

Kahshe Country Craft Show

Rockhaven 10 am - 3 pm

Contact Judy Ring 705 689 6080

rockhaven@bellnet.ca

Saturday August 9

Kahshe Lake Regatta*

Nagaya Beach

At the present moment we do not have an organiser for the Regatta. If you (and a couple of friends) can step up to spearhead this event, please contact John Mertl at

john.mertl@gmail.com

416 550 9872

c Skype: john.mertl

Saturday August 16

Ryde 135

see page 9

HaulAwayDay*

see page 11

Contact haulaway@kahshelake.ca

*KLRA events



Gull Lake Rotary Park, Gravenhurst

2014 Season

Sunday, June 22nd

The Muskoka Concert Band
Neil Barlow - Conductor

Sunday, June 29th

The Gravenhurst Bifocals Concert Band
Neil Barlow - Conductor

Sunday, July 6th

Gino Monopoly
Internationally Acclaimed Elvis Tribute Artist

Sunday, July 13th

Eddy and The Stingrays
50's Rock and Roll

Sunday, July 20th

The Liverpool 4
Beatles Tribute

Sunday, July 27th

Hotel California
The Original Tribute to The Eagles

Sunday, August 3rd

Johnny Cash, June Carter, Tammy Wynette Tribute

Sunday, August 10th

The Beckett Family
Featuring the Award Winning
Linsey Beckett Fiddling and Step Dance

Sunday, August 17th

The Good Brothers
Canada's Multi-award Winning
Country Vocal Group

"Music on the Barge" concerts start at 7:30 p.m. unless otherwise stated. Collections are taken during the concerts and don't forget to bring your favourite lawn chair and enjoy.

Concerts will be cancelled and not relocated to another venue in the event of inclement weather, rain or lightning for the safety of the audiences and the performers.

What's on in Gravenhurst?

Shows, Festivals and Events



The Opera House	Various dates	See page 8 for details
Music on the Barge	Gull Lake Park	Every Sunday June 22 - August 17
BYOC* Programme on facing page		7:30 pm - 9:00 pm
Cinema under the Stars	By the Opera House	Every Thursday in July and August
BYOC* check the local papers for film titles		Entertainment 7:30 pm --> Movie at dusk
	For film titles, check the local papers, or go to www.gravenhurst.ca	
Farmers' Market	Muskoka Wharf	Every Wednesday May 21 - October 29
		9 am - 2 pm
Water Ski Show	Muskoka Wharf	Every Wednesday July and August
	by Boston Pizza	7:30 pm - 8:30 pm
Antique and Classic Car Show	Gull Lake Park	June 14
Bethune Cup Dragon Boat Races	Muskoka Wharf	June 28 10 am - 5 pm
Antique and Classic Boat Show	Muskoka Wharf	July 5 9 am - 4 pm
Gravenhurst Triathlon	Muskoka Wharf	July 13 All day
In Water Boat and Cottage Show	Muskoka Wharf	July 25, 26, 27 10 am - 5 pm
Muskoka Fall Classic Rowing Regatta	Gull Lake Park	September 6 8 am - 4 pm
BYOC*		

*BYOC = Bring Your Own Chair

Gravenhurst Activity Guide 2014

Take advantage of all that the Gravenhurst Sports and Recreation Department has to offer:

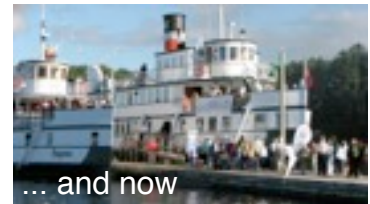
- swimming lessons
- synchronised swim
- beach volleyball
 - kayaking
 - speedminton
 - day camp
- "Get Active" program
- and much, much more.

For more details and/or to register online visit www.gravenhurst.ca, put the cursor on **Community Calendar** and click on **Sports and Recreation**, click on **Sports and Recreation** a 2nd time, then on **Spring and Summer Recreation Guide - 2014**.

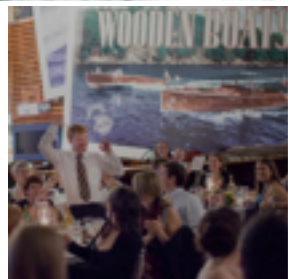
Muskoka Memories Since 1866!



Then



... and now



Visit www.realmuskoka.com/celebrations to receive a to receive a **Lake Association preferred 10% cruise fare discount** off your group booking or private charter event this year!

1-866-687-6667

salesmanager@realmuskoka.com



80 Years of Summer Theatre in Muskoka

July 9 - 19 Hay Fever Live Theatre | Dinner Theatre | Comedy
 Dinner: 6:30 pm | Show: 8:00 pm | Dinner & Show: \$56 | Show only: \$31

July 23 - 26 Stand By Me: Music of the Brill Building Concert
 Matinee Show: 2:00 pm | Evening Show: 8:00 pm | Tickets: \$36

July 30 - Aug 9 Love Letters Live Theatre | Drama
 Matinee Show: 2:00 pm | Evening Show: 8:00 pm |



The Kermit Long Kids' Fishing Derby

will take place from 9 am to 4 pm on Saturday, July 26th, with lots of fun for kids **twelve and under**.

Every child's first fish will be rewarded with a **toonie**, but they may enter as many fish as they can.



There are 11 species categories (i.e. rock bass, perch, smallmouth bass) with a first place trophy for each and monetary awards for 2nd and 3rd places.

In addition, there are 3 permanent trophies* (with a personal trophy as well) for the three largest fish overall. A child is only eligible for 1 of these awards.

We will measure fish from 9am to 4pm at Denne's Dock. Prizes will be awarded on Denne's Dock at 5 pm. So, mark your summer calendar and join us on **July 26th**. All are welcome, whether as 12 and under participants or 13 and over observers.

Karen and Ken Long

705 687 8646

Sandra and Toivo Madrus

705 689 8778

* to be returned before next year's fishing derby



KAHSHE COUNTRY CRAFTS SHOW & SALE

Sunday August 3rd 2014, 10 am – 3 pm, rain or shine
Primary recipient will be the OPP Canine Unit

and we are hoping for a dog demonstration in the afternoon.

We need help in the following areas: setting up, cleaning up, parking, food tent, manning the baking table and the book stall/second-hand donation tables. And especially we need a **dynamic individual who will smile and talk to vendors and customers alike, who is comfortable in front of a microphone, who will be a cheerleader and a gracious host for the Show and who will keep things moving along smoothly and on time.** This person's title will be



Master of Ceremonies. If you are that → person, please call Dennis or Judy Ring as soon as possible at 705 689 6080 or e-mail rockhaven@bellnet.ca .

We also need donations of:

- cakes, cookies and other baked goods for the bake table;
- books, cds, dvds, vhs tapes, puzzles, board games, etc. for the second-hand tables;
- any item or service that you believe someone else would enjoy and be willing to bid on for the Auction.

705 689 6080 or rockhaven@bellnet.ca .



On Saturday August 16th, 2014 the KLRA will have a table at the Ryde Community 135th Anniversary celebration at which we will be selling memberships, KLRA merchandise and The Healing Waters of Kahshe. We also hope to have a KLRA float in the Parade. The theme could be lake safety: 2 watercraft, 1 holed sitting on a rock, and 1 in perfect condition alongside a rock marker. If you are interested in undertaking this project, please contact rydefloat@kahshelake.ca as soon as possible. Expenses will be covered by the KLRA.

KLRA Board of Directors

President	John Mertl	john.mertl@gmail.com	416 550 9872	c Skype: john.mertl
Past President	Bob Reyburn	bob_reyburn@vianet.ca	705 684 8507	705 644 1063 c
Treasurer	Greig Holder	greig_holder@sympatico.ca	705 689 1092	416 409 1274 c
Secretary	Ron Pearson	rpearson1203@rogers.com	705 689 1025	416 843-2805
Newsletter	Keith Price	keithonkahshe@rogers.com	705 687 7108	416 233 7688 h
Beach Committee	Gary Baskerville	gbaskervillen622@rogers.com	705 684 9610	905 403 8007
Water Access Committee	Henry Kowalewski	hchowalewski@erico.com	705 687 5048	905 336 1039
Conservation Committee	Bob Reyburn	bob_reyburn@vianet.ca	705 684 8507	705 644 1063 c
Communication Committee	John Kuropatwa	jkuropatwa@rogers.com	705 689 2118	905 773 4259
Safety Committee	Steve Wild	steve.wild@hp.com	705 689 4628	
<u>Directors at large</u>				
	Cathy Dunphy	catherinedunphy@rogers.com	705 687 5405	416 699 0461 h
	Margaret Taylor	martay@rogers.com	705 689 5881	905 726 8955
	April Drane	aprilgadsbydrane@sympatico.ca	705 684 9087	
	Chris Andrews	chris.parallax@gmail.com		416 817 5547
	Sandra Moad	sandramoad1@gmail.com	705 689 8778	416 221 7253
<u>Non-Board Members</u>				
<u>Website</u>	Clare Henderson	crhenderson@sympatico.ca	705 689 9917	905 469 0551
<u>Rock Markers</u>	Barry Elder	bjelder@rogers.com	416 931 8157	
<u>Database/Membership</u>	Eleanor McLean	3delta@sympatico.ca	705 689 6420	

IN MEMORIAM

William Bruce 'Bill' BARROW 1944 - 2014

Bill Barrow, a long-time cottager on Kahshe, died peacefully on April 17, 2014 with his family by his side at the age of 69. He is sadly missed by his wife Jo-Ann, sons Robert (Christina) and Michael (Sarah), grand-daughter Katherine, brothers Dennis and Ted (Susan), brother-in-law John (Sheila) and by many nieces and nephews.

Carl Franklin BREAK 1918 - 2014

Carl Break died peacefully aged 95 on April 19th. He will be greatly missed by Iva, his wife of 73 years, by his children, Evan, Gordon (Brenda), William (Debby) Pauline Paradis (Arthur) Carol Shepstone (Norman) and Richard (Carol), by his 14 grandchildren, 25 great-grandchildren and 2 great-great-grandchildren, and by his many, many friends.

Carl was not a cottager; he lived in the house opposite the entrance to Bass Lake Park. And for many years he was the guardian of the key which allowed access to the park for the organisers of the Housey's Rapids Picnic.

Protect your cottage, protect yourself

In an effort to help offset the ever-rising costs of cottage ownership (taxes, mortgage, upkeep), many cottagers are now renting out their cottages for part of the summer.

This is a great way to help offset ever rising taxes, mortgage payments and upkeep costs. Sometimes the renters are friends and sometimes they are complete strangers, but in either case, the owner needs to protect himself and his property by having the appropriate insurance coverage in place. If you are thinking of renting out your cottage this year, you may find that your current insurance company does not allow any rental whatsoever and will ask you to place your business with another company. In this case, using the services of a company that specializes in cottage rentals is probably the best way to protect yourself. Not only can they help advertise and fill your property, but, more importantly, they will screen the customers and they have appropriate lease agreements already in place.

Some important points to consider:

- You are insuring your property against damage (or destruction) and yourself against litigation.
- The insurance company will want to know the age of the dwelling, updates to roof, electrical, plumbing and heating systems, type of heating, access to the property, frequency of use and length of the rental period.
- They will also need to know who is responsible for maintenance and who is inspecting the cottage between rentals.
- What hazards are present on your property? Are railings, and stairs in good shape? How safe is the path down to the water? Is your dock in good shape?
- What about your watercraft? Are they part of the deal? Are your boats, canoes, etc. in good working condition and safe? Do your renters have their boating licences?
- Make sure that you carry enough insurance, i.e. be realistic about the cost of rebuilding (Heaven forbid!), and be aware that \$1,000,000 liability coverage does not go as far as it used to!

Our best advice is to ask questions and contact an insurance broker with experience in the cottage rental field.

Chris Johnson, Gidley & Associates Insurance Brokers Ltd (See ad on p11)

Your Cottage Country Insurance Broker

Gidley & Associates Insurance Brokers Ltd

Secondary homes, Seasonal Properties and a specialized program for Rental Cottages with no limit on rental weeks.



705 687-7233 / 888 572-1996



gidleyinsurance.com / info@gidleyinsurance.com



Paul Caswell

Owner

1179 North Kahshe Lake Road
Kilworthy Ontario
POE 1G0
P.O. Box 117A

OFFICE
705 689-5082

Email: dennesmarina@gmail.com

www.dennesmarina.com

'Kahshe Lake 400' Point'



Immaculate year round cottage with boathouse. 4 bdrms, 2 full baths, fireplace, large sun deck facing south. Sunsets too! Garage and workshop, Skidoo shelter, Cranberry Island. Best deal on Kahshe Lake!!

Call **Ken Little** at

Muskoka Real Estate Services 687-7777

Your
ad
HERE!

Contact the editor at keithonkahshe@bell.net

Classifieds

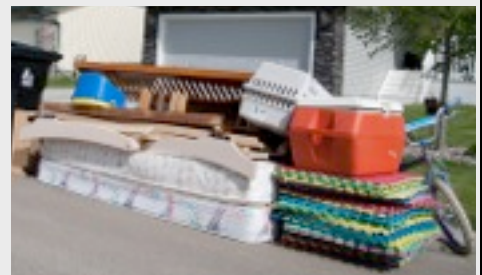
Wanted - a 12 foot aluminum boat and a 9.9 hp motor. Please contact me, Pat Moffat, by phone **905 492 3220** or by email: patmoffat.pat@gmail.com

For sale - 1903 pump organ in very good condition. Very ornate with mirror, lamp holders. Also an adjustable stool. **Free.** Call **705 689 6781.**



Kahshe Lake HaulAwayDay

If you have trouble every year getting rid of large awkward items such as mattresses, appliances, old boats, furniture, BBQs, etc., read on.




The KLRA would like to find out how much interest there would be in having such items picked up from your cottage or from Rockhaven and hauled away to the town dump this summer...for **free!**


Please let us know by **June 1, 2014** if this service would be useful.

Contact haulaway@kahshelake.ca. Thank you!

MuskokaMeats
& 100 MILE STORE
 Meat Pkgs, Freezer Orders, Cutting, Wrapping, Smoking, Sausage making
 Local Without Growth Hormones - Beef, Pork, Chicken, Lamb, Wild Game
 naturally Grown Seasonal Produce, Preserves, Perennials
 Local Arts and Crafts
 2288A Hwy 11 North, Gravenhurst
 705-687-3283
 (3 doors past the Muskoka Store)
www.muskokameats.com



Chidiac
Animal
Hospital.
 of Gravenhurst



150 Bay Street, Gravenhurst, ON P1P 1T8
 705.687.7292 • 1.855.687.7394

Osborn Contracting
 Custom built homes and cottages
 Decks, docks and additions

glenn@cottageconcepts.ca
 705 689 2166
 on Kahshe since 1986

Terry Pilger c.s.p.
RE/MAX North Country Realty Inc.
 Mobile: 705-644-1195
 Office: 705-687-2243



Follow me on Facebook, Twitter & LinkedIn!
 or Join Google Plus
 Also Be sure to check out my website!






OUTDOOR STORAGE
BOAT SHRINKWRAP
WINTERIZED/CLEANING
CATERING TO KAHSHE
 HWY 11 & N. KAHSHE LK. RD.
705-323-5099
muskokastorage.ca

RE/MAX
 Brokerages - Independently Owned & Operated
North Country Realty Inc., Brokerage*

NANCY SUTTON KEHL
 Sales Representative 1075 North Kahshe Lake Road
 Hall of Fame (705) 689 2627 Bus./Res.
 Lifetime Achievement Award (705) 689 1921 Fax
ERIC KEHL suttonkehl@bell.net
 Sales Representative
 Enjoying pristine Kahshe Lake for 4 generations!



APRIL DRANE
 Sales Representative
 D 705.684.9087
 C 416.617.3733

"I am a Kahshe Lake Cottager with a boat on the lake ready to list & sell your property"

Chestnut Park Real Estate Limited, Brokerage
 110 Medora Street, Box 444
 Port Carling, Ontario P0B 1J0

GADSBY'S OF GRAVENHURST
 181 Bay St.



- Staging Services Designed to Sell your home or cottage
- Painting & Decorating Services
- Retail shop open May to December
 Call for hours (705) 684-9087
aprilgadsbydrane@sympatico.ca

R.J.LIQUIDATION
A New Truck Load Every Week
Hours: Friday 9 a.m. - 7 p.m.
Saturday 9 a.m. - 5 p.m.
Sunday 9 a.m. - 2 p.m.
 Highway 11 (northbound) between South and North Kahshe Lake Roads
rjliquidation@sympatico.ca

Adam's
Tree Works

FOCUSSED ON PRESERVATION

Adam Bates - Certified Arborist • Fully Insured
 Pruning • Technical Removals • Insect & Disease Management
 Emergency Storm Work • Hydro Pruning • Cabling & Bracing



AdamsTreeWorks.com 705.345.3757